

Swabi (Mardan, Khyber Pakhtunkhwa) Pakistan

Swabi, is a district in Khyber Pakhtunkhwa of Pakistan.

Although the district is situated at 34° N of Equator but its a continues flat land between Indus and Kabul River that converge towards the extreme south of Swabi District the rivers are used to draw irrigation canals for the villages.

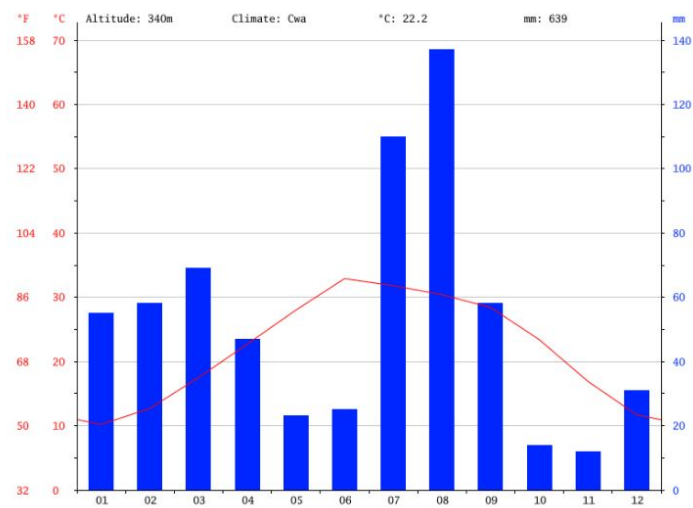
Due to being Flatland the cannabis is farmed either in Patches in Mild to dense Jungle like area, Mango Orchids Or Inside High wall parameter, like 10-14 ft. Which still remains easily accessible though but just hidden from Plain sight.

The Government interference has impacted the cannabis farming a lot already and to in a rapidly developing district, living a socially acceptable status means farmers weaning away from this cannabis as a livelihood.



CLIMATE :

Swabi has a humid-subtropical climate, while the summers are not extremely hot like north India but they are quite similar in being humid and muggy, with constant rains. The annual precipitation averages 639 mm. November is the driest month with an average rainfall of 12 mm, while the wettest month is August, with an average 137 mm of precipitation. June is the hottest month of the year with an average temperature of 32.9 °C. The coldest month January has an average temperature of 10.2 °C. Swabi is an agricultural centre with many villages included in it, namely - Turlandi, asota, permuli and many more around the razzar District which is their main agricultural belt. These villages usually grow wheat, rice and Corn alongside limited cannabis crops mostly in remote villages, for producing Garda (Hashish) from domesticated Landrace varieties out of peshawar valley part of which now makes up Mardan district.



Swabi has a temperate climate, that is a proper hot summers followed by a small transition period of 30 days and cold winters. The wild/Unaffected varieties can be seen growing around everywhere and do cross pollinate with the domesticated shorter plants most probably imported from peshawar Valley, (which will also be a mix of domesticated afghani /Paki genetics).



Swabi Preservation from P1 seed stock to F1

In Northern India at remote location.

The fast flowering expression comes with below average bract yields however copious amounts of very sticky resin, that closely resembles the Highland Hash plant like resin quality in texture, smaller trichomes but abundant and very sticky. The smell is quite intense like short flowering Broadleaf plants and gives off a clear smell of Raw-Mango/ Spices like pepper. The smoke induces a very balanced and generally associated with long flowering narrow leaf variety kind of uplifting High, which stays over for an amazingly long duration. The Onset of High is almost immediate and then it gradually shapes up. This plant from morphology to effects reminds a lot about Himalayan Hash plant varieties from a hollow stalk to raw mango and pepper like flavour. From what's commonly learnt about the regions near punjab, That Wilder types cross pollinate the imported farmed varieties often in places like Swabi (KPK), but unlike many other parts in India, the farmers here understand the importance of maintaining the desirable heirloom expression to save it from degradation overtime. The remaining females were excluded because of considerably longer flowering term.

The F1 seeds were then gifted to Mass medical strains or further refinement and development work. The seeds provided to Mass medical strains came from the Female#2 shown here.



Swabi#2 Female Selection

Swabi Preservation from F1 Seed stock to F2

Swabi Pakistani is a totally unique and rare, unhybridized pure landrace/heirloom strain from the Swabi region of Pakistan. These seeds were gifted to me by Irrazin of Indian Landrace Exchange and are being released for the Breeders Without Borders project. Proceeds will be donated to building the Cannabis Library in the Himalayas! This is a very special project with amazing intentions. The farmer who cultivated this pure variety for over 40 years was forced to stop cultivating due to legal issues and has gifted the seeds to Irrazin with the wishes that they be spread around the world so this valuable and unique strain will not become extinct forever. Irrazin has teamed up with Mass Medical Strains to make this project a reality, and together we will be able to share this beautiful unique gene pool with the world!

Irrazin started with “P1” parental seed stock and took it a further generation which is considered “F1”
MMS grew these F1 seeds. With the original intention of making regular “F2” seeds, mother nature blessed us with a full pack of females! So the only choice was to make feminized seeds. There were some seriously incredible plants in here, so I reversed my two favorite plants, and pollinated 5 incredible mothers with the mixed pollen of both reversed phenotypes, in order to maintain the genetic diversity in the line! There are so many special expressions to be found. These plants are surprisingly stable and stress resistant even in indoor cultivation, which is excellent for such a “wild” gene pool. I guarantee over 99% of American growers have never seen a strain like this! It’s totally unrelated to any of the modern hybrids.

In veg, these plants have a very unique stem rub of curry and spices, perfectly reminiscent of the region of the world they descend from! There are two main phenotypes which could be called “indica” or “sativa” phenos in structure, or short and squat (like a typical hybrid you may grow) and then a taller lanky pheno with thinner branches.



However both the indica and sativa structured plants in this gene pool have amazing uplifting energetic highs! Pure unhybridized strains often have a much cleaner and more distinct unique vibration. I describe these as a tropical vacation mindset. When you are on vacation you are excited and ready to explore, while being highly in tune with your surroundings and sensations. This is the exact effect I've gotten numerous times from the Swabi smoke. It is also very spiritually motivating, calm and centered, while giving you energy and motivation to explore both physical reality and your internal bliss. Some phenotypes induce extreme munchies, and some are very fast-thought provoking and racy, motivating the body for action and movement, while not being as anxious as many modern sativa hybrids can be. We have also seen up to 9% cbd in some phenotypes!



Here are the available mothers to choose your seeds from, or you can collect them all! We have thoroughly tested each line, and they all have amazing plants. You will find a fair amount of structural variation in any of them (both tall and short phenotypes are possible), however you'll notice they all have the same Swabi funk to them, a special woody nutty spice and also "landracey" sharp tones which are very unique and sativa-like in nature! These plants can yield very well with large colas and are easy to grow indoors and out! Does well with or without topping! The intensity of the terpenes in some phenos can rival any award winning modern hybrid, and you'll find serious winners in any of these 5 lines.



Mom 1: This mom has the tall sativa structure. Incredible unique plant with a sour vinegar wet smelling terpene that I have never ever seen in cannabis before. It also has a sharp spray paint solvent/lacquer and strong pine and wood terms in the back.



Mom 2: Sour
body odor and
pumpkin aroma,
on an indica
frame. Super
frosty and dense.



Mom 3: Super wild smell of rank body odor, onion, garlic, almost similar to the well-known strain “gmo” but also with the swabi funk and a very interesting sativa aroma of carrots and pet store rabbit-area...! Insane. The leaves in this pheno got a bit more curled round in the last weeks and has a distinct look.



Mom 4: This was a super stacker (big yielder) with sativa structure. Rubber spice and extreme cream terpenes! Very unique and delicious.



Mom 5: Indica structured plant with amazing loud burnt rubber, sweet spice and wood in the back. Really special as well, although hey all are! Mix: This is a random mix of seeds off of multiple of the 5 mothers. We have also found pink haired phenos from the mixed pack.





Swabi F2 Feminized reproduction/Preservation Release will directly benefit the creation of the “NANDA DEVI CANNABIS LIBRARY” Project.

The Library will be built in the state of Uttarakhand (Distt. Chamoli), perched right in the laps of the himalayas at the foothills of the nanda devi mountain peak.

A big thank you, to Mass medical strains from the entire INDIAN LANDRACE EXCHANGE team for the his invaluable service to this magical plant.